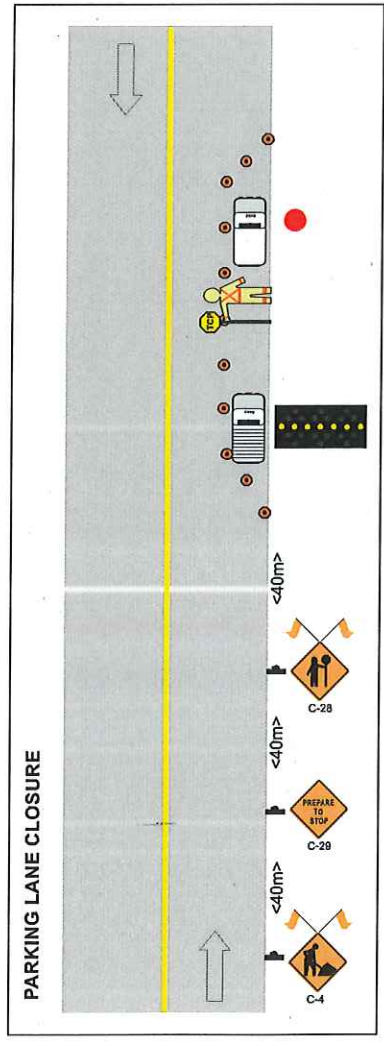
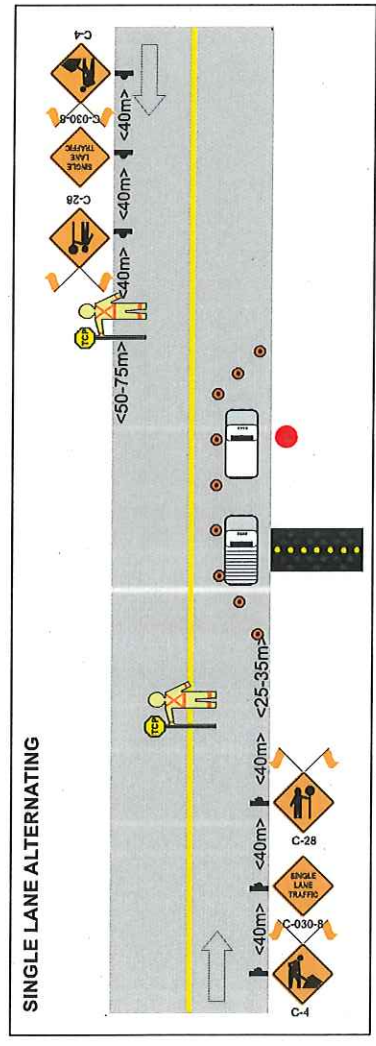




NOTES:

1. Description & Location: HTI stringing aerial cable and access to manholes along Kipp Ave and Mary St, Chilliwack.
2. The traffic control will be provided by 2 TCP's and 1 lane closure vehicle with mounted Flashing Arrow Board and any traffic signalling that may be needed. TCP's to position prior to curved section to gain sight line.
3. Sign location and spacing will be in conformity with the requirements of the Manual for Work on Roadways as published by the MoTH. Changes to layout of signage may be made by the TCP in charge to accommodate traffic and local conditions on site at the time.

NOTE: This traffic plan is not an order of TCP and equipment. It is the Contractor's responsibility to order the resources required for this plan at least 24 hours prior to the works being performed. Call the contracted traffic control company dispatch to confirm your order.



THIS TRAFFIC PLAN HAS BEEN PREPARED BY ANSAN INDUSTRIES LTD. BASED, IN PART, ON INFORMATION PROVIDED BY THIRD PARTIES. EVERY EFFORT HAS BEEN MADE TO ENSURE THAT THE PLAN CONFORMS TO THE REQUIREMENTS OF THE MOTOR VEHICLE ACT (RSBC 1986) CHAPTER 31 AND REGULATIONS AND TO THE ACTS OF TRAFFIC CONTROL MANUAL. IMPLEMENTATION OF THIS PLAN WILL BE UNDER THE SUPERVISION OF ANSAN INDUSTRIES LTD. WHO TAKES NO RESPONSIBILITY FOR THE USES TO WHICH THIS PLAN IS PUT BY THIRD PARTIES NOT DIRECTLY UNDER THE SUPERVISION OF ANSAN INDUSTRIES LTD.

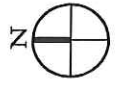


TABLE A
Positioning of devices on conventional roadways for various speed limits

Regulatory speed limit km/hr	50	60	70	80	90-100
1a	35 (1:10)	55 (1:15)	75 (1:20)	90 (1:25)	110 (1:30)
1b	5	8	10	12	15
2	10	10	10	10	10
3	30	60	90	120	150
4	40	60	80	100	150

Distances shown are in metres and are minimum weight for 2".
 Symbols (Traffic cones are generally used in dry (day) but if used at night must be reflective).
 Dimensions 3" apply to dimensions tapes, abutment tapes, and to two-way traffic signs on levelled roads. Dimensions 4" apply to dimensions tapes, abutment tapes, and to two-way traffic signs on levelled roads. Dimensions 5" apply to dimensions tapes, abutment tapes, and to two-way traffic signs on levelled roads. Dimensions 6" apply to dimensions tapes, abutment tapes, and to two-way traffic signs on levelled roads. Dimensions 7" apply to dimensions tapes, abutment tapes, and to two-way traffic signs on levelled roads. Dimensions 8" apply to dimensions tapes, abutment tapes, and to two-way traffic signs on levelled roads. Dimensions 9" apply to dimensions tapes, abutment tapes, and to two-way traffic signs on levelled roads. Dimensions 10" apply to dimensions tapes, abutment tapes, and to two-way traffic signs on levelled roads. Dimensions 11" apply to dimensions tapes, abutment tapes, and to two-way traffic signs on levelled roads. Dimensions 12" apply to dimensions tapes, abutment tapes, and to two-way traffic signs on levelled roads. Dimensions 13" apply to dimensions tapes, abutment tapes, and to two-way traffic signs on levelled roads. Dimensions 14" apply to dimensions tapes, abutment tapes, and to two-way traffic signs on levelled roads. Dimensions 15" apply to dimensions tapes, abutment tapes, and to two-way traffic signs on levelled roads. Dimensions 16" apply to dimensions tapes, abutment tapes, and to two-way traffic signs on levelled roads. Dimensions 17" apply to dimensions tapes, abutment tapes, and to two-way traffic signs on levelled roads. Dimensions 18" apply to dimensions tapes, abutment tapes, and to two-way traffic signs on levelled roads. Dimensions 19" apply to dimensions tapes, abutment tapes, and to two-way traffic signs on levelled roads. Dimensions 20" apply to dimensions tapes, abutment tapes, and to two-way traffic signs on levelled roads. Dimensions 21" apply to dimensions tapes, abutment tapes, and to two-way traffic signs on levelled roads. Dimensions 22" apply to dimensions tapes, abutment tapes, and to two-way traffic signs on levelled roads. Dimensions 23" apply to dimensions tapes, abutment tapes, and to two-way traffic signs on levelled roads. Dimensions 24" apply to dimensions tapes, abutment tapes, and to two-way traffic signs on levelled roads. Dimensions 25" apply to dimensions tapes, abutment tapes, and to two-way traffic signs on levelled roads. Dimensions 26" apply to dimensions tapes, abutment tapes, and to two-way traffic signs on levelled roads. Dimensions 27" apply to dimensions tapes, abutment tapes, and to two-way traffic signs on levelled roads. Dimensions 28" apply to dimensions tapes, abutment tapes, and to two-way traffic signs on levelled roads. Dimensions 29" apply to dimensions tapes, abutment tapes, and to two-way traffic signs on levelled roads. Dimensions 30" apply to dimensions tapes, abutment tapes, and to two-way traffic signs on levelled roads. Dimensions 31" apply to dimensions tapes, abutment tapes, and to two-way traffic signs on levelled roads. Dimensions 32" apply to dimensions tapes, abutment tapes, and to two-way traffic signs on levelled roads. Dimensions 33" apply to dimensions tapes, abutment tapes, and to two-way traffic signs on levelled roads. Dimensions 34" apply to dimensions tapes, abutment tapes, and to two-way traffic signs on levelled roads. Dimensions 35" apply to dimensions tapes, abutment tapes, and to two-way traffic signs on levelled roads. Dimensions 36" apply to dimensions tapes, abutment tapes, and to two-way traffic signs on levelled roads. Dimensions 37" apply to dimensions tapes, abutment tapes, and to two-way traffic signs on levelled roads. Dimensions 38" apply to dimensions tapes, abutment tapes, and to two-way traffic signs on levelled roads. Dimensions 39" apply to dimensions tapes, abutment tapes, and to two-way traffic signs on levelled roads. Dimensions 40" apply to dimensions tapes, abutment tapes, and to two-way traffic signs on levelled roads. Dimensions 41" apply to dimensions tapes, abutment tapes, and to two-way traffic signs on levelled roads. Dimensions 42" apply to dimensions tapes, abutment tapes, and to two-way traffic signs on levelled roads. Dimensions 43" apply to dimensions tapes, abutment tapes, and to two-way traffic signs on levelled roads. Dimensions 44" apply to dimensions tapes, abutment tapes, and to two-way traffic signs on levelled roads. Dimensions 45" apply to dimensions tapes, abutment tapes, and to two-way traffic signs on levelled roads. Dimensions 46" apply to dimensions tapes, abutment tapes, and to two-way traffic signs on levelled roads. Dimensions 47" apply to dimensions tapes, abutment tapes, and to two-way traffic signs on levelled roads. Dimensions 48" apply to dimensions tapes, abutment tapes, and to two-way traffic signs on levelled roads. Dimensions 49" apply to dimensions tapes, abutment tapes, and to two-way traffic signs on levelled roads. Dimensions 50" apply to dimensions tapes, abutment tapes, and to two-way traffic signs on levelled roads. Dimensions 51" apply to dimensions tapes, abutment tapes, and to two-way traffic signs on levelled roads. Dimensions 52" apply to dimensions tapes, abutment tapes, and to two-way traffic signs on levelled roads. Dimensions 53" apply to dimensions tapes, abutment tapes, and to two-way traffic signs on levelled roads. Dimensions 54" apply to dimensions tapes, abutment tapes, and to two-way traffic signs on levelled roads. Dimensions 55" apply to dimensions tapes, abutment tapes, and to two-way traffic signs on levelled roads. Dimensions 56" apply to dimensions tapes, abutment tapes, and to two-way traffic signs on levelled roads. Dimensions 57" apply to dimensions tapes, abutment tapes, and to two-way traffic signs on levelled roads. Dimensions 58" apply to dimensions tapes, abutment tapes, and to two-way traffic signs on levelled roads. Dimensions 59" apply to dimensions tapes, abutment tapes, and to two-way traffic signs on levelled roads. Dimensions 60" apply to dimensions tapes, abutment tapes, and to two-way traffic signs on levelled roads. Dimensions 61" apply to dimensions tapes, abutment tapes, and to two-way traffic signs on levelled roads. Dimensions 62" apply to dimensions tapes, abutment tapes, and to two-way traffic signs on levelled roads. Dimensions 63" apply to dimensions tapes, abutment tapes, and to two-way traffic signs on levelled roads. Dimensions 64" apply to dimensions tapes, abutment tapes, and to two-way traffic signs on levelled roads. Dimensions 65" apply to dimensions tapes, abutment tapes, and to two-way traffic signs on levelled roads. Dimensions 66" apply to dimensions tapes, abutment tapes, and to two-way traffic signs on levelled roads. Dimensions 67" apply to dimensions tapes, abutment tapes, and to two-way traffic signs on levelled roads. Dimensions 68" apply to dimensions tapes, abutment tapes, and to two-way traffic signs on levelled roads. Dimensions 69" apply to dimensions tapes, abutment tapes, and to two-way traffic signs on levelled roads. Dimensions 70" apply to dimensions tapes, abutment tapes, and to two-way traffic signs on levelled roads. Dimensions 71" apply to dimensions tapes, abutment tapes, and to two-way traffic signs on levelled roads. Dimensions 72" apply to dimensions tapes, abutment tapes, and to two-way traffic signs on levelled roads. Dimensions 73" apply to dimensions tapes, abutment tapes, and to two-way traffic signs on levelled roads. Dimensions 74" apply to dimensions tapes, abutment tapes, and to two-way traffic signs on levelled roads. Dimensions 75" apply to dimensions tapes, abutment tapes, and to two-way traffic signs on levelled roads. Dimensions 76" apply to dimensions tapes, abutment tapes, and to two-way traffic signs on levelled roads. Dimensions 77" apply to dimensions tapes, abutment tapes, and to two-way traffic signs on levelled roads. Dimensions 78" apply to dimensions tapes, abutment tapes, and to two-way traffic signs on levelled roads. Dimensions 79" apply to dimensions tapes, abutment tapes, and to two-way traffic signs on levelled roads. Dimensions 80" apply to dimensions tapes, abutment tapes, and to two-way traffic signs on levelled roads. Dimensions 81" apply to dimensions tapes, abutment tapes, and to two-way traffic signs on levelled roads. Dimensions 82" apply to dimensions tapes, abutment tapes, and to two-way traffic signs on levelled roads. Dimensions 83" apply to dimensions tapes, abutment tapes, and to two-way traffic signs on levelled roads. Dimensions 84" apply to dimensions tapes, abutment tapes, and to two-way traffic signs on levelled roads. Dimensions 85" apply to dimensions tapes, abutment tapes, and to two-way traffic signs on levelled roads. Dimensions 86" apply to dimensions tapes, abutment tapes, and to two-way traffic signs on levelled roads. Dimensions 87" apply to dimensions tapes, abutment tapes, and to two-way traffic signs on levelled roads. Dimensions 88" apply to dimensions tapes, abutment tapes, and to two-way traffic signs on levelled roads. Dimensions 89" apply to dimensions tapes, abutment tapes, and to two-way traffic signs on levelled roads. Dimensions 90" apply to dimensions tapes, abutment tapes, and to two-way traffic signs on levelled roads. Dimensions 91" apply to dimensions tapes, abutment tapes, and to two-way traffic signs on levelled roads. Dimensions 92" apply to dimensions tapes, abutment tapes, and to two-way traffic signs on levelled roads. Dimensions 93" apply to dimensions tapes, abutment tapes, and to two-way traffic signs on levelled roads. Dimensions 94" apply to dimensions tapes, abutment tapes, and to two-way traffic signs on levelled roads. Dimensions 95" apply to dimensions tapes, abutment tapes, and to two-way traffic signs on levelled roads. Dimensions 96" apply to dimensions tapes, abutment tapes, and to two-way traffic signs on levelled roads. Dimensions 97" apply to dimensions tapes, abutment tapes, and to two-way traffic signs on levelled roads. Dimensions 98" apply to dimensions tapes, abutment tapes, and to two-way traffic signs on levelled roads. Dimensions 99" apply to dimensions tapes, abutment tapes, and to two-way traffic signs on levelled roads. Dimensions 100" apply to dimensions tapes, abutment tapes, and to two-way traffic signs on levelled roads.

LEGEND

- TRAFFIC CONTROL PERSON
- LANE CLOSURE TRUCK
- TRUCK MOUNTED FAB
- TRAFFIC CONE (DELINEATOR) TYPE 'D'
- TRAFFIC SIGN LOCATION
- WORK TRUCK
- WORK ROUTE
- MANHOLE LOCATION



ANSAN TRAFFIC CONTROL
 Ansan Industries Ltd.
 2020 Wilkey Way, Richmond,
 British Columbia V6V 1N2
 Tel: (604) 270-1541 Fax: (604) 270-1545
 Email: plans@ansan.net

CUSTOMER CONTACT:	FOCUS (2615709) PARVEEN AGGARWAL: 604-529-1842
DATE:	2016-SEP-26
PLAN #:	PL 16-771 KIPP AVE & MARY ST, CHILLIWACK AERIAL & UNDERGROUND CABLE ACCESS
DWG BY:	CHRISTINE WONG
PAGES:	PG 1